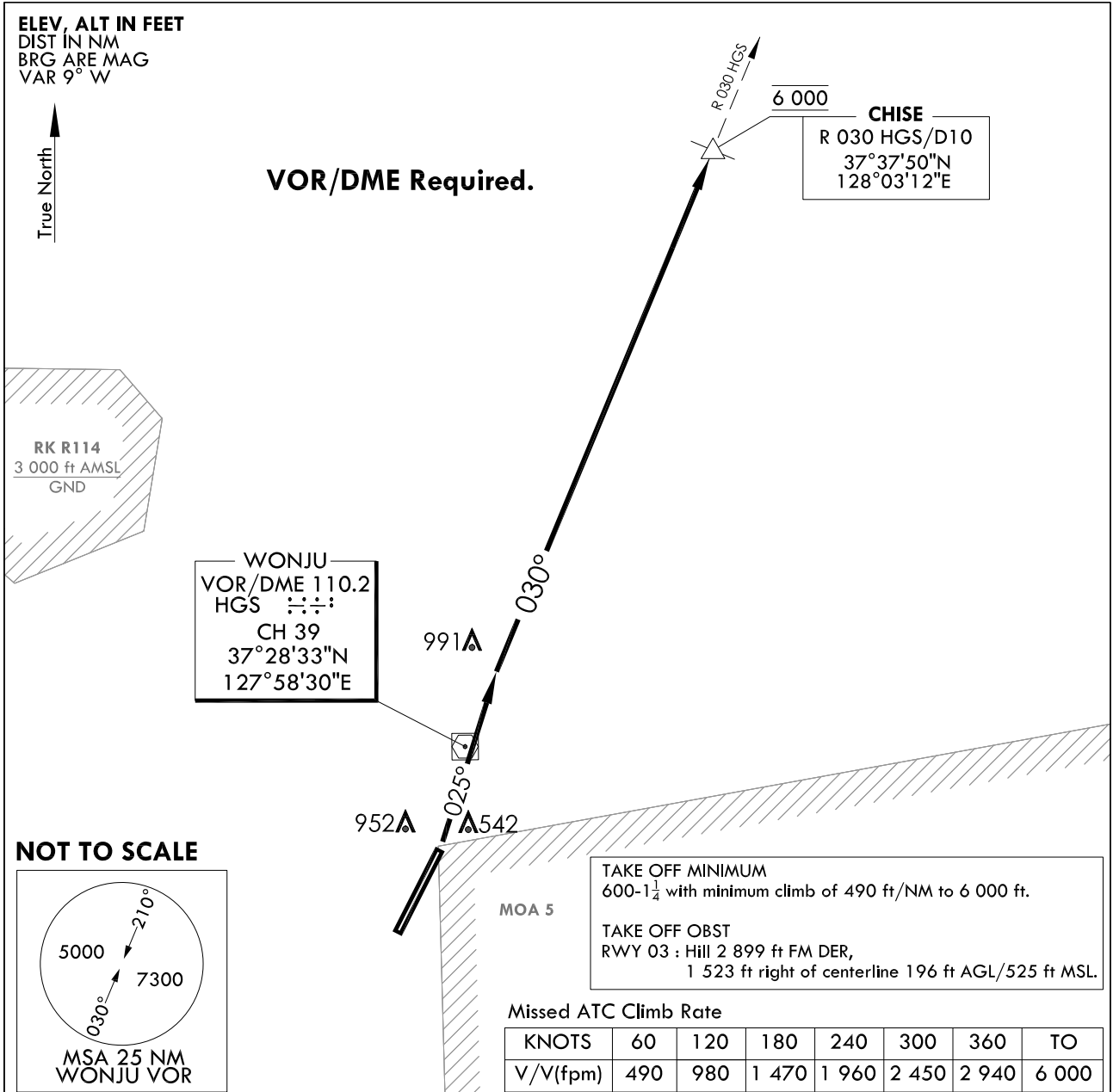


STANDARD DEPARTURE CHART  
INSTRUMENT (SID)

TRANSITION ALT	14 000	WONJU DEP	130.2	268.5
TRANSITION LVL	FL 140	WONJU TWR	118.325	126.2
			236.6	265.5

WONJU/Wonju(RKNW)  
RWY 03  
CHISE 1

Note : Departure under U.S TERPS.



**DEPARTURE PROCEDURE DESCRIPTION**

**CHISE 1 DEPARTURE**

RWY 03 : Climb to 6 000 ft via HDG 025° to intercept R 030 HGS, then R 030 HGS to CHISE, then direct to Enroute fix and climb to assigned altitude.

Change : Information of MSA(6300 → 7300).

**INTENTIONALLY**

**LEFT**

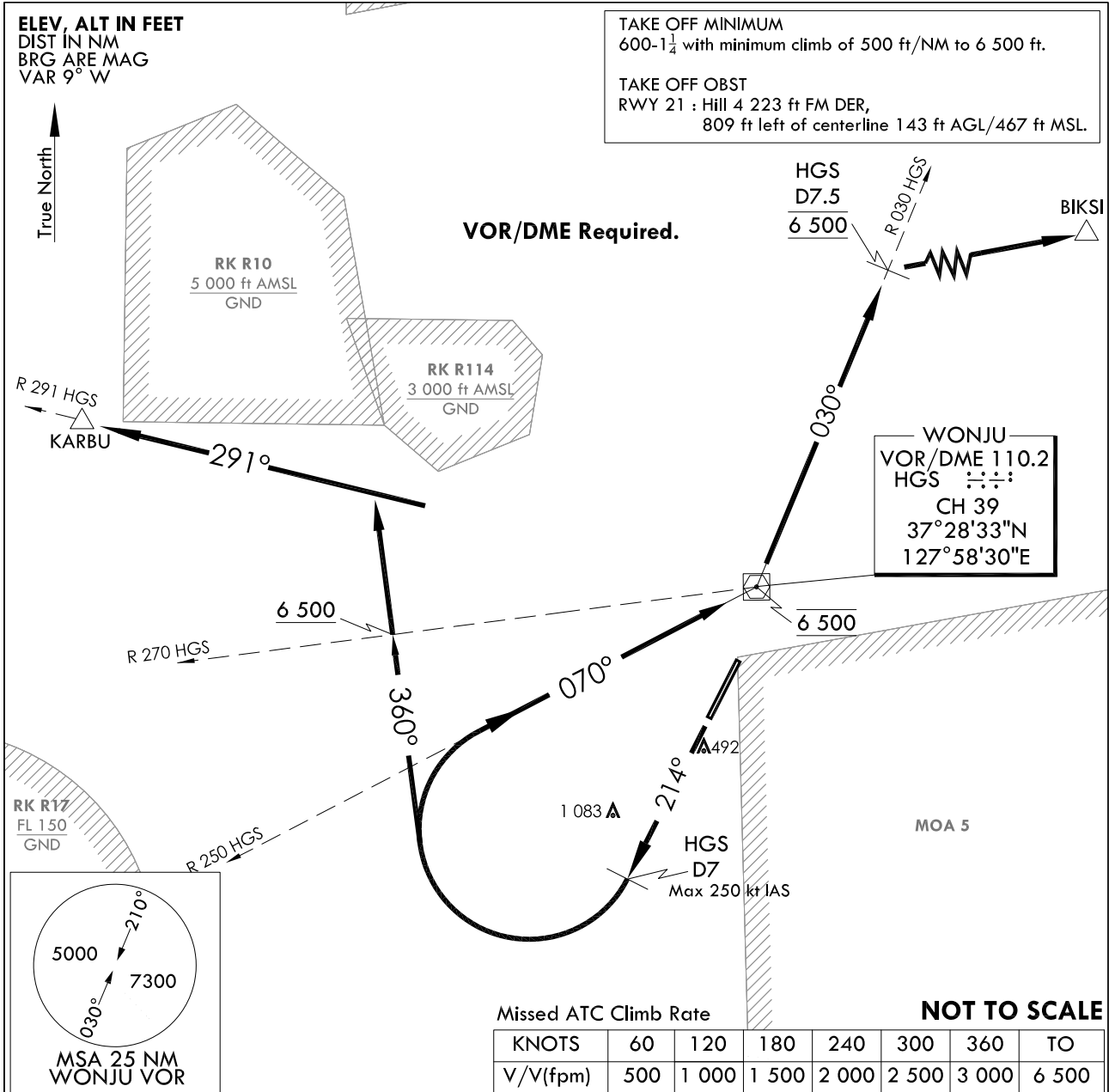
**BLANK**

**STANDARD DEPARTURE CHART  
INSTRUMENT (SID)**

TRANSITION ALT	14 000	WONJU DEP	130.2	268.5
TRANSITION LVL	FL 140	WONJU TWR	118.325	126.2
			236.6	265.5

**WONJU/Wonju(RKNW)**  
RWY 21  
WONJU 7

Note : Departure under U.S TERPS.



**DEPARTURE PROCEDURE DESCRIPTION**

**WONJU 7 DEPARTURE**

RWY 21 : Climb to 6 500 ft via HDG 214° to HGS D7, thence...  
Max speed 250 kt IAS until reaching 6 500 ft.

**KARBU transition** : Then right turn HDG 360° to intercept R 291 HGS and cross R 270 HGS at or above 6 500 ft, then R 291 HGS to KARBU and climb to assigned altitude by ATC.

**BIKSI transition** : Then right turn to intercept R 250 HGS and cross HGS at 6 500 ft, then left turn R 030 HGS to HGS D7.5 and cross at 6 500 ft, then direct to BIKSI and climb to assigned altitude by ATC.

Change : Information of MSA(6300 → 7300).

**INTENTIONALLY**

**LEFT**

**BLANK**

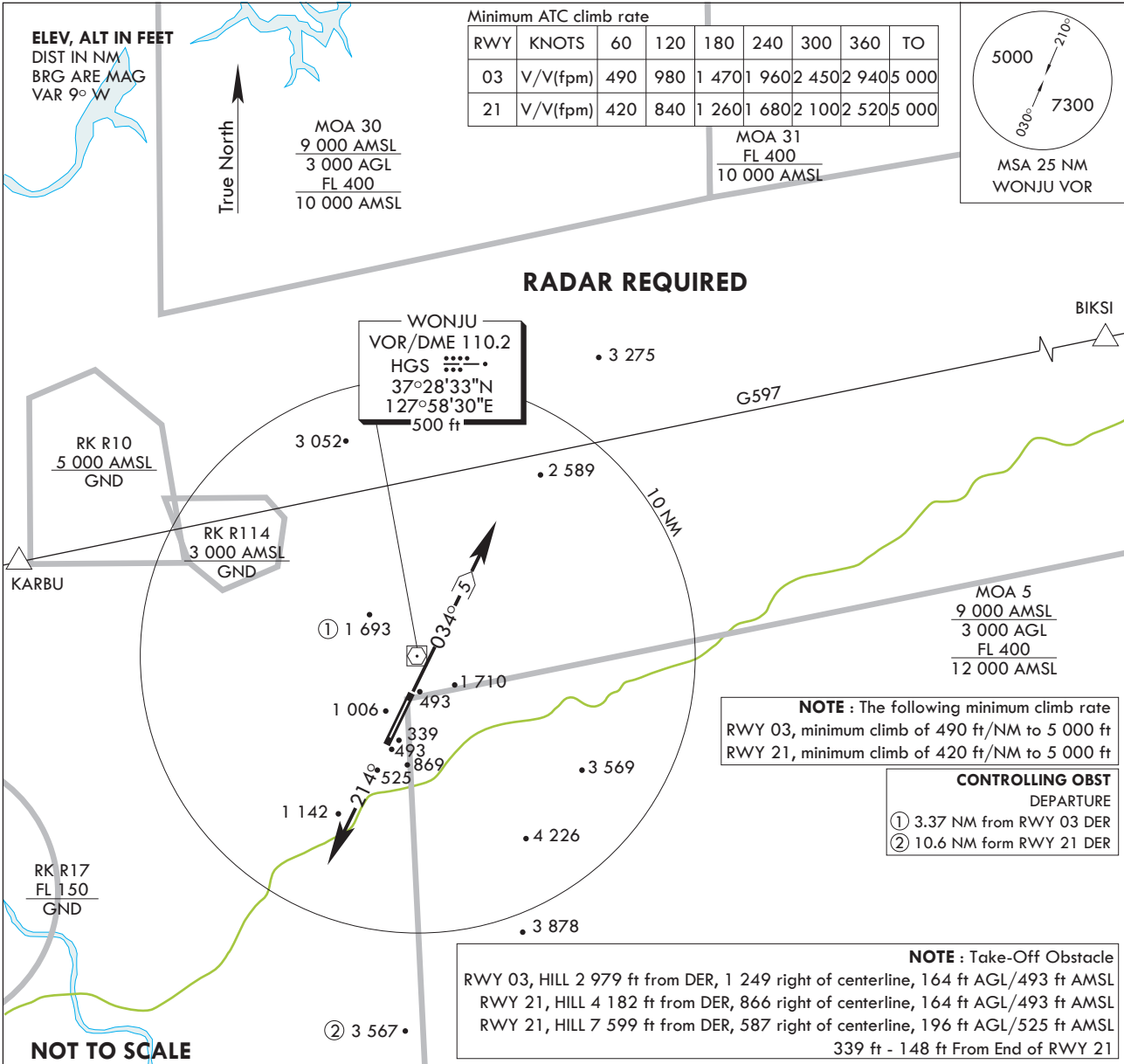
STANDARD DEPARTURE CHART  
INSTRUMENT(SID)

TRANSITION ALT 14 000  
TRANSITION LVL FL 140

WONJU DEP	130.2	268.5
WONJU TWR	265.5	118.325
	236.6	126.2

WONJU/Wonju(RKNW)  
RWY 03/21  
WONJU 1D

Note : Departure under U.S. TERPS.



**DEPARTURE ROUTE DESCRIPTION**

TAKE-OFF RWY 03 : Climb HDG 034° to 5 NM, Thence.....

TAKE-OFF RWY 21 : Climb HDG 214°, Thence.....

..... Expect radar vectors to intercept filed altitude/filed Enroute fix or Navaid.  
Maintain 7 000 ft or assigned altitude(flight level). Expect filed altitude/flight level  
10 minute after departure.

LOST COMMUNICATIONS : If radio contact is not established with departure control prior to reaching  
5 000 ft, continue climb to 7 000 ft before turning to filed fix/Navaid and  
proceed filed route and altitude.

Change : Information of MSA(6300 → 7300).

**INTENTIONALLY**

**LEFT**

**BLANK**

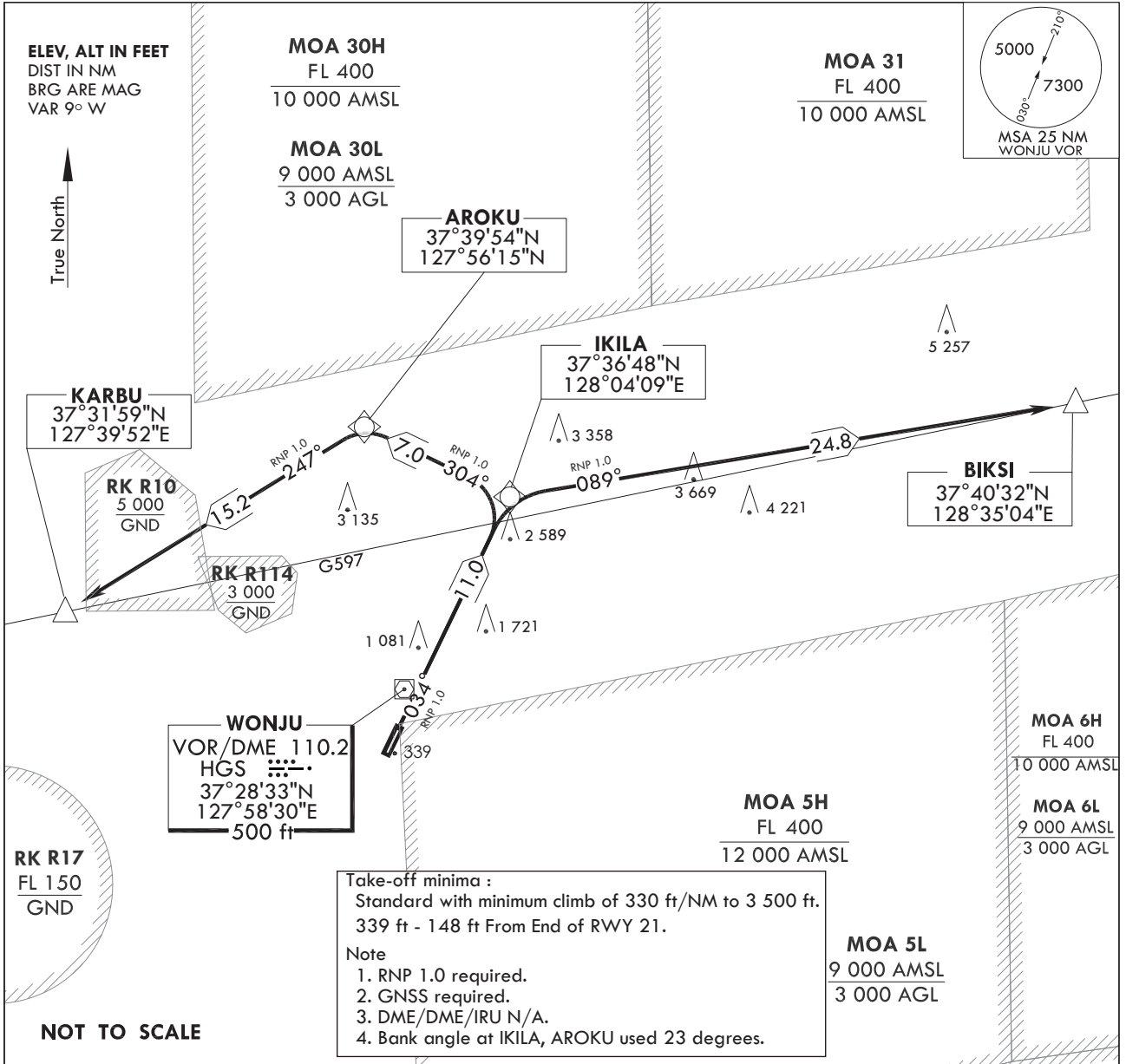
**STANDARD DEPARTURE CHART  
INSTRUMENT(SID)**

TRANSITION ALT 14 000  
TRANSITION LVL FL 140

WONJU DEP 130.2  
268.5  
WONJU TWR 126.2 118.325  
236.6 265.5

**WONJU/wonju (RKNW)  
RWY 03  
RNAV(GNSS) IKILA 1**

Note : Departure under U.S TERPS.



**DEPARTURE ROUTE DESCRIPTION**

**TAKEOFF RWY 03 :** Climb on course 034° to IKILA, thence.....

**KARBU TRANSITION**

Then on track 304° to AROKU then on track 247° to cross KARBU at 6 500 ft.

**BIKSI TRANSITION**

Then on track 089° to cross BIKSI at 6 500 ft.

Change : Information of fix and procedure names(ORIVO → IKILA, KIRST → AROKU).

WONJU/wonju (RKNW)  
RWY 03  
RNAV(GNSS) IKILA 1

AERONAUTICAL DATA TABULATION

Standard Instrument Departure Procedure Coding Tables

RNAV(GNSS) IKILA 1 RWY 03

Serial Number	Path Descriptor	Waypoint Identifier	Fly -Over	Course/Track ° M(° T)	Distance (NM)	Turn Direction	Altitude (ft)	Speed (kt)	Coordinates	VPA /TCH	Navigation specification	Remarks
001	-	RWY 21	-	-	-	-	-	-	37°26'56.74"N 127°58'02.23"E	-	RNP APCH	-
002	CF	IKILA	-	034(026.3)	11.0	-	-	-	37°36'47.66"N 128°04'08.88"E	-	RNP APCH	CG 330 ft/NM to 3 500

KARBU Transition

Serial Number	Path Descriptor	Waypoint Identifier	Fly -Over	Course/Track ° M(° T)	Distance (NM)	Turn Direction	Altitude (ft)	Speed (kt)	Coordinates	VPA /TCH	Navigation specification	Remarks
001	-	IKILA	-	-	-	-	-	-	37°36'47.66"N 128°04'08.88"E	-	RNP APCH	-
002	TF	AROKU	-	304(296.3)	7.0	-	-	-	37°39'53.96"N 127°56'14.89"E	-	RNP APCH	-
003	TF	KARBU	-	247(238.8)	15.2	-	6 500	-	37°31'59.00"N 127°39'52.00"E	-	RNP APCH	-

BIKSI Transition

Serial Number	Path Descriptor	Waypoint Identifier	Fly -Over	Course/Track ° M(° T)	Distance (NM)	Turn Direction	Altitude (ft)	Speed (kt)	Coordinates	VPA /TCH	Navigation specification	Remarks
001	-	IKILA	-	-	-	-	-	-	37°36'47.66"N 128°04'08.88"E	-	RNP APCH	-
002	TF	BIKSI	-	089(081.2)	24.8	-	6 500	-	37°40'32.00"N 128°35'04.00"E	-	RNP APCH	-

Change : Information of fix and procedure names(ORIVO → IKILA, KIRST → AROKU).



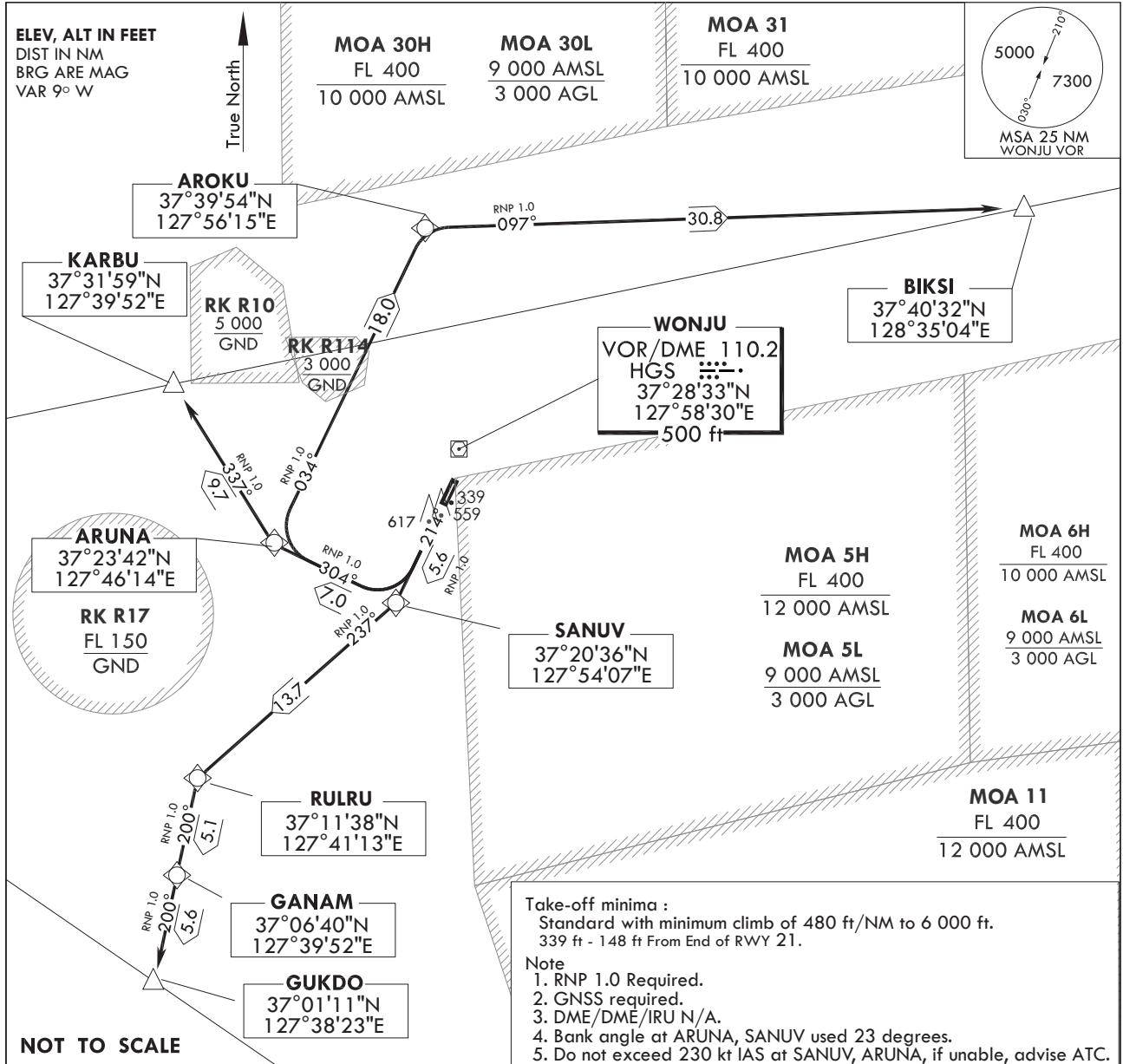
**STANDARD DEPARTURE CHART  
INSTRUMENT(SID)**

TRANSITION ALT 14 000  
TRANSITION LVL FL 140

WONJU DEP 130.2  
268.5  
WONJU TWR 126.2 118.325  
236.6 265.5

**WONJU/Wonju (RKNW)  
RWY 21  
RNAV(GNSS) SANUV 2**

Note : Departure under U.S TERPS.



**DEPARTURE ROUTE DESCRIPTION**

**TAKEOFF RWY 21 :**

Climb on course 214° to SANUV, thence.....

**KARBU TRANSITION**

Max 230 kt IAS until SANUV then on track 304° to ARUNA, then on track 337° to cross KARBU at 6 500 ft.

**BIKSI TRANSITION**

Then on track 304° to ARUNA, Max 230 kt IAS until ARUNA, then on track 034° to AROKU, then on track 097° to cross BIKSI at 6 500 ft.

**GUKDO TRANSITION**

Then on track 237° to RULRU, then on track 200° to GANAM, then on track 200° to cross GUKDO at 6 500 ft.

Change : Amended phrase(500 → 5000) and Withdrawal of procedure name.

WONJU/wonju (RKNW)  
RWY 21  
RNAV(GNSS) SANUV 2

AERONAUTICAL DATA TABULATION

Standard Instrument Departure Procedure Coding Tables

RNAV(GNSS) SANUV 2 RWY 21

Serial Number	Path Descriptor	Waypoint Identifier	Fly -Over	Course/Track ° M(° T)	Distance (NM)	Turn Direction	Altitude (ft)	Speed (kt)	Coordinates	VPA /TCH	Navigation specification	Remarks
001	-	RWY 03	-	-	-	-	-	-	37°25'36.98"N 127°57'12.75"E	-	RNP APCH	-
002	CF	SANUV	-	214(206.3)	5.6	-	-	-230	37°20'36.46"N 127°54'06.91"E	-	RNP APCH	CG 480 ft/NM to 6 000 ft

KARBU Transition

Serial Number	Path Descriptor	Waypoint Identifier	Fly -Over	Course/Track ° M(° T)	Distance (NM)	Turn Direction	Altitude (ft)	Speed (kt)	Coordinates	VPA /TCH	Navigation specification	Remarks
001	-	SANUV	-	-	-	-	-	-	37°20'36.46"N 127°54'06.91"E	-	RNP APCH	-
002	TF	ARUNA	-	304(296.2)	7.0	-	-	-	37°23'42.07"N 127°46'14.18"E	-	RNP APCH	CG 480 ft/NM to 6 000 ft
003	TF	KARBU	-	337(328.5)	9.7	-	6 500	-	37°31'59.00"N 127°39'52.00"E	-	RNP APCH	-

BIKSI Transition

Serial Number	Path Descriptor	Waypoint Identifier	Fly -Over	Course/Track ° M(° T)	Distance (NM)	Turn Direction	Altitude (ft)	Speed (kt)	Coordinates	VPA /TCH	Navigation specification	Remarks
001	-	SANUV	-	-	-	-	-	-	37°20'36.46"N 127°54'06.91"E	-	RNP APCH	-
002	TF	ARUNA	-	304(296.2)	7.0	-	-	-230	37°23'42.07"N 127°46'14.18"E	-	RNP APCH	-
003	TF	AROKU	-	034(026.2)	18.0	-	-	-	37°39'53.96"N 127°56'14.89"E	-	RNP APCH	-
004	TF	BIKSI	-	097(088.6)	30.8	-	6 500	-	37°40'32.00"N 128°35'04.00"E	-	RNP APCH	-

GUKDO Transition

Serial Number	Path Descriptor	Waypoint Identifier	Fly -Over	Course/Track ° M(° T)	Distance (NM)	Turn Direction	Altitude (ft)	Speed (kt)	Coordinates	VPA /TCH	Navigation specification	Remarks
001	-	SANUV	-	-	-	-	-	-	37°20'36.46"N 127°54'06.91"E	-	RNP APCH	-
002	TF	RULRU	-	237(229.0)	13.7	-	-	-	37°11'38.00"N 127°41'12.94"E	-	RNP APCH	CG 480 ft/NM to 6 000 ft
003	TF	GANAM	-	200(192.2)	5.1	-	-	-	37°06'40.05"N 127°39'52.09"E	-	RNP APCH	-
004	TF	GUKDO	-	200(192.3)	5.6	-	6 500	-	37°01'10.93"N 127°38'22.86"E	-	RNP APCH	-

Change : Information of speed restriction at SANUV(-210 kt → -230 kt).